



OpenScape Deployment Service V7

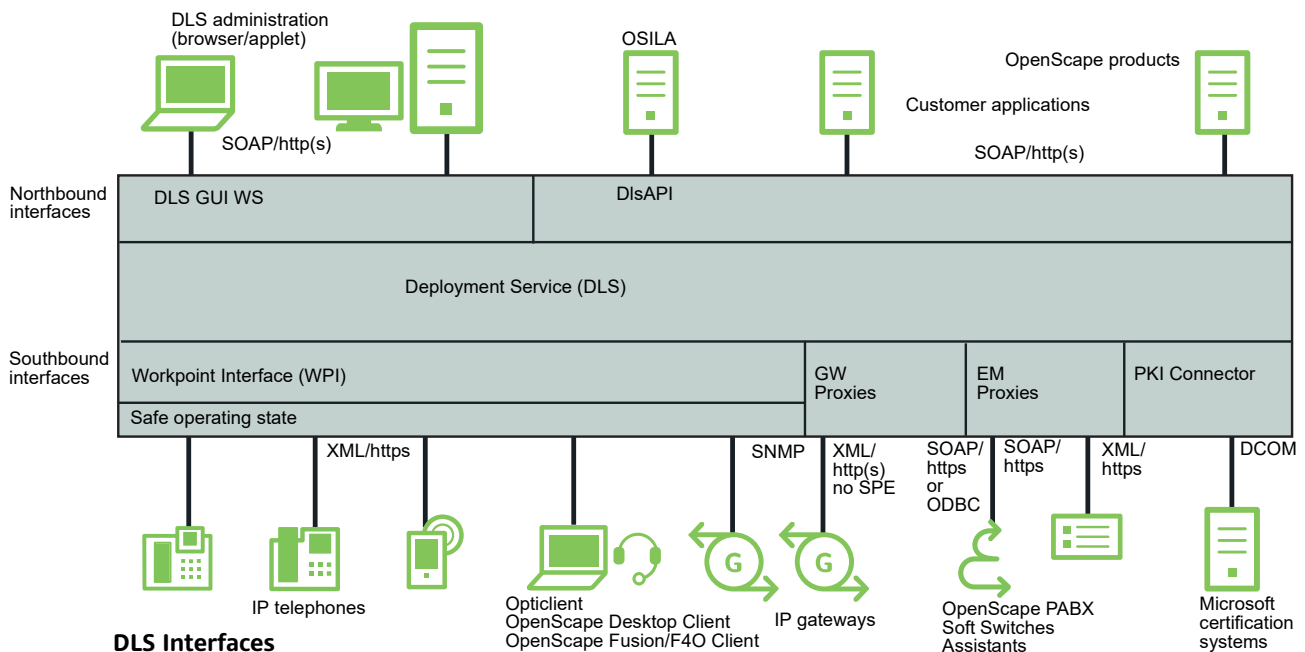
Integrated solution for administering IP devices and gateways in HiPath and OpenScape networks.

The Deployment Service (DLS) management application offers customers and service employees an integrated solution for administering IP devices (IP telephones and IP clients) and gateways in OpenScape networks, i.e. in SIP and HFA-based networks, including OpenScape Unified Communications, OpenScape Voice, OS4K and OSBiz.

DLS is the central component with which devices, QoS parameters, and the software distribution of IP devices are administered for the customer's entire OpenScape environment. Integrating DLS in the customer network enables the customer to take stock of and manage his complete IP device infrastructure. Any expansions with additional end-user devices (initial commissioning), as well as the relocation of telephones within his company, can also be performed directly by the customer himself.

DLS Highlights

- Stand-alone management application
- Support of OpenScape Desktop/Fusion/F4O Clients, OptiPoint, OpenStage, DPIP, CP, WLAN telephones and IP gateways
- Management of IP devices and QoS data collection parameters
- Update and upgrade of IP devices with new software
- Centralized configuration management
- Simple graphical user interface (web-based GUI) with internal Web-Service interface for DLS administration (DLS GUI WS)
- Interoperability with OS 4000 Manager, Common Management Platform (OpenScape Voice Assistant) and OSBiz
- Plug & Play support for automatic first-time installation and initialization of telephone parameters
- Keyset support for SIP devices
- Backup & Restore of the device configuration data
- OS 4000, OS Biz: IP gateway support at the DLS Workpoint Interface (WPI)



Inventory Management

- Display of the inventory data of the IP devices that are supported by DLS
- Display of the location information, such as building and room, for end-user devices (OpenScape LIA; only in combination with a network management system)
- Configuration of the inventory information (e. g. location, cost accounts)
- Import/export of inventory data from/to external databases
- Simple search and selection of data

Certificates

- Connector for Microsoft certification systems that are used for generating and withdrawal of certificates
- Manual import of certificates from a PKI infrastructure
- Automatic import of certificates from a PKI infrastructure via DlsAPI
- Generation of certificates if no external PKI infrastructure is available
- Automatic distribution of certificates

Software Deployment Management

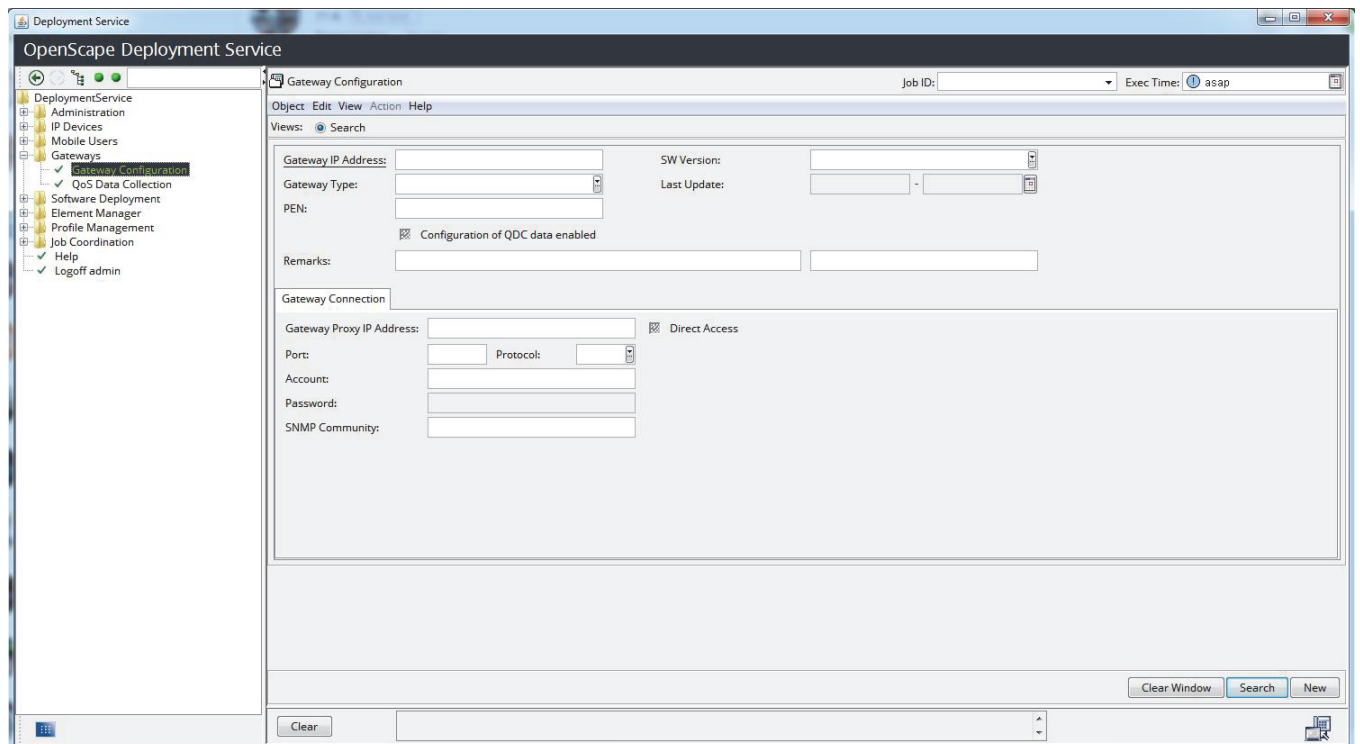
Software deployment from a central server or from distributed servers in a customer network:

- Remote and time-delayed software downloads for selected IP devices
- Support for additional files
- Software version and update control
- Central software update and fall-back solution

Configuration Management

Configuration of all IP devices:

- Bulk changes for a number of selected IP devices
- Planned and direct configuration
- Planned and immediate restarting of devices
- Status indicator for initiated or completed configurations of the IP telephones

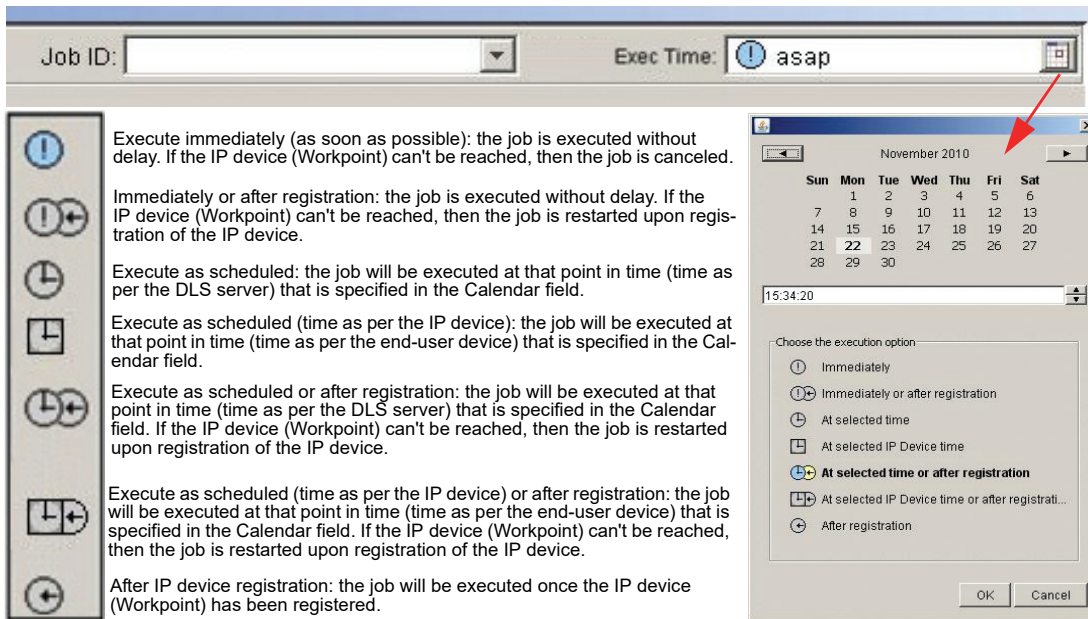


Gateway Configuration

Job Management

Job Management serves to configure, execute and log deployment jobs.

The following options are available for executing deployment jobs:



Job Management

DI/API

Open WebService interface for numerous DLS functions:

- Development of Java applications
- SOAP via https
- SSL encryption (https)
- Server/client authentication

Hardware Deployment

Scenarios:

- Stand-alone, with the database on the same (Single Node) or a different server (Multi Node)
- Integrated in OpenScope Voice Simplex and with OpenScope Voice UC

Mobility

SIP Mobility

Support for mobility-capable optiPoint, OpenStage, DPIP and CP phones:

- Configuration and administration of mobile users
- Logging on/off of mobile users
- Automatic logon of a user onto the "home" phone after logging off

HFA Mobility

- After HFA Mobility logon, makes end-user device call lists and phone book data (including clip images) available
- Saves a mobile user's phone book data in the DLS database upon logging off
- HFA Mobility is only supported as of version V1R5 of the OpenStage end-user devices

Client capability

Client capability has been available since DLS V3. This makes it possible to administer the data of multiple clients (customers) in a single DLS.

Supported Systems

OpenScape Systems

- OpenScape Business V2
- OpenScape 4000 V7 and V8
- OpenScape Voice V7, V8 and V9

IP devices

- CP200/CP400/CP600 (all M3 SIP and HFA versions)
- Desk Phone IP 35G/35G Eco/55G (all M3 SIP and HFA versions)
- OpenStage 5, 15, 20, 20E, 40, 60, 80 (all M3 HFA and SIP versions)
- OpenScape Personal Edition V4 or higher
- OpenScape Desktop Client and OpenScape Personal Client (HFA and SIP)
- OpenScape Fusion Client and OpenScape Fusion for Office Client
- optiPoint 400 economy, standard
- optiPoint 410 entry, economy, economy plus, standard, advanced
- optiPoint 420 economy, economy plus, standard, advanced
- optiPoint 600 office
- optiPoint WL2 professional
- Sidecars Inventory

Operating systems

- Servers
- Windows Server 2012 R2/2016 (32 and 64-bit)
- SUSE Linux Enterprise Edition (version such as OpenScape Voice)

Copyright © Unify Software and Solutions GmbH & Co. KG, 05/2018

All rights reserved.

Reference No.: A31002-S2370-D101-4-7629

The information provided in this document contains merely general descriptions or characteristics of performance which in case of actual use do not always apply as described or which may change as a result of further development of the products. An obligation to provide the respective characteristics shall only exist if expressly agreed in the terms of contract.

Availability and technical specifications are subject to change without notice.

Unify, OpenScape, OpenStage and HiPath are registered trademarks of Unify Software and Solutions GmbH & Co. KG. All other company, brand, product and service names are trademarks or registered trademarks of their respective holders.